



The purpose of the Gem, Lapidary, and Mineral Society of Montgomery County MD, Inc. is “to increase knowledge and popular interest in earth sciences, geology, mineralogy, paleontology, lapidary arts, and related subjects.”

REGULAR MEETINGS

There is no general meeting during the month of August.

BOARD OF DIRECTORS MEETING

There is no Board of Directors Meeting in August.

PRESIDENT’S MESSAGE

Chris Luzier

Hopefully your summer is going well and everyone is ready for the coolness of autumn that will soon be on the way. I am certainly ready for it and the digging season to be more comfortable to work in. It will be wonderful to be able to get out on more quarry trips with the group and find some new material. If you have not been on one of our fieldtrips, please don't miss the chance to go out this fall and hand dig some new pieces!

We have had a couple of additional collection donations come in the door over the summer break. They have a variety of material in them, with some very old material from the 1920's and 30's as well. The one collection actually has a letter from the late 20's, detailing a few of the collection specimens and their localities. You've got to love a mineral specimen with the history preserved as well!

We will be bringing out material from the collections for the fall meetings and the October meeting's member auction. As you recall, the member auction is for all of you to bring in specimens from your collections that you are ready to part with and make some more cash to spend on more specimens for your collection! It was a big success earlier this year and everyone had a lot of fun. With plenty of weeks left until our next meeting on September 14th, this is the time to get your pieces ready to sell for the October auction. Enjoy the rest of your summer and I look forward to seeing you all again in September.

Stay cool—Chris Luzier

MESSAGE FROM OUR MEMBERSHIP CHAIR—SUMMER IS A GREAT TIME TO PAY DUES

Doug Baum

GLMSMC memberships expire on August 31, 2015 and new annual dues are due on September 1, 2015. Single membership is still \$15 per year. Family membership (defined as up to 2 adults and children under 18 years of age) is \$20 per year.

We pay dues for **EFMLS/AFMS** affiliations and over \$3 for insurance for each member over 10 years of age so it's very important when renewing to **LIST ONLY THOSE** who will be actively taking part in Society activities.

Please send dues (check or cash to GLMSMC):
Membership Chairman Doug Baum
11205 Golden Meadow Court
Germantown MD 20876-1740
[240-888-7485](tel:240-888-7485) or email dbaum18@aol.com for questions

If you send me a self-addressed, stamped envelope, I will mail your membership card(s) back to you; otherwise you can pick them up at the September meeting.

VERY IMPORTANT! If your phone number, address, email, or other vital information has changed, please let me know. **HELP by paying your dues on time this year. DO IT NOW while you are thinking about it.**

GLMSMC Regular Meeting Minutes

GLMSMC regular meeting minutes of June 8, 2015

The June 8, 2015 regular meeting was called to order by President Chris Luzier at 7:45 PM. There were 35 adult members present at the regular meeting and 4 youth members at the FRA meeting. The President's first order of business was to have the adult FRA leader, Mark Dahlman, award the Fossil Badge to Ella Slaby. All members present congratulated Ella on her first FRA badge.

Silent Auction & EFMLS Raffle Tickets: Chris Luzier brought 10 crates of the donated heirloom collection of rocks and minerals for silent auction. Members with UV lamps demonstrated that many of the rocks were fluorescent and from Franklin/Sterling Hill, NJ. Bidding closed at 9:15 PM. Additionally, EFMLS raffle tickets went on sale for \$5 each with the prize being a high quality gemology stereo microscope.

New Board Members: A call went out to members for candidates and nominations for new officers to replace current board members when their 2-year terms expire this fall.

2016 Show Issues: The cab polishing station at the annual show is unique and a big draw for kids. However, **we need a bidder to pre-cut 350 rough cab forms or this station will be cancelled.**

May 2015 Minutes Approved: It was M/S/P to approve the minutes of the May 11th, 2015 regular meeting and of the May 26th, 2015 Board of Directors meeting.

Field Trips: Field Trip Chairman, Jonathan Harris, announced that a field trip was scheduled for Saturday, June 13, to the National Limestone and Middleburg Quarries in PA. There are no scheduled field trips during July but the next field trip will be on Saturday, August 22nd to Willis Mountain, a kyanite quarry in VA.

EFML Liaison: Wendell Mohr informed members of upcoming events and items of interest, including:

- The August 14-16 Gem Miners Jubilee in Lebanon, PA
- The August 24-30 Wild Acres workshop in Little Switzerland, NC
- The August 26-27 Howard County Gem & Mineral Show.
- Members were reminded that two (\$250 ea.) scholarships are still available for the Wild Acres workshop.

Treasurer's Report: Holly McNeil reported that our current account stands at \$59.92.

Conrad Smith: Members joined in wishing Conrad Smith success as he prepares to enter college at the New Mexico Institute of Mining and Technology in Socorro, New Mexico, for a degree in geology. We all enjoyed a beautiful cake that was made to congratulate Conrad and wish him well. Conrad plans to keep his GLMSMC membership active and to let us know how things are going for him in New Mexico.

Presentation: We had a wonderful presentation on the Great West. The evening's speaker was our very own Andy B. Celmer, who took members on a photo journey of his 2014 travel trailer road trip west in search of interesting stopovers, geologic points of interest, and great American rock shops. Great photos!!! Despite the normal slow pace of geologic change, the Grand Canyon seems to have improved greatly since Andy's first visit there in 1976.

The program was followed by a short break and then the show table. The show table prize of a Fluorite on Quartz from the Blanchard Mine, NM, was won by Andy Muir; the general door prize of a polished cross section of a woolly mammoth tooth was won by Reed Owens. It was M/S/P to adjourn the meeting at 9:47 PM.

-Dave Fryauff, Secretary

Photos by Reed Owens





GLMS-MC Show Table

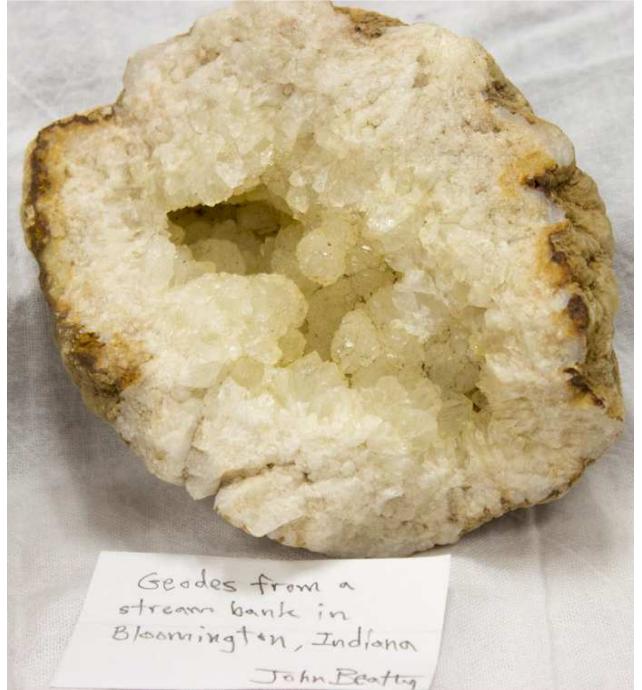
Dave Fryauff
 Photos by Reed Owens

Member's Name	Specimen Descriptions	Locality
Elmer Lantz	Fossil dinosaur bone	GLMSMC show
Pat Repik-Byrne	Chalcedony-Heulandite	Pune, India
Dave Fryauff	Chrysocolla-Malachite-Serpentine-Cuprite*	Mineral Hill Mine, Sykesville, Carroll Co., MD
John Beatty	Geode*	Bloomington Indiana
" "	Geode	Brazil
Frances Becker	Epidote, Quartz	Alaska
Gary Leaman	Trilobite	Mongolia
Diane Leaman	Pink Stilbite on chalcedony	India
Gerald Elgert	Stilbite, Manganese dendrites*	Gettysburg Quarry, PA
Andy Muir	Fluorite & Calcite	Arizona
Lyle Peterson	CaCO ₃ stalagmite*	National Limestone Quarry, Mt Pleasant Mills, PA
Joel Rosen	Vanadinite, Barite	Morocco
Don Graves	Marine fossils*	Calvert Cliffs, MD

Holly McNeil	Halite	California
Andy B	Copper ore	Unknown
Reed Owens	Willemite & Calcite	Franklin, NJ
Wendell Mohr	Australian mineral coin	Perth mint, Australia
Patricia Cronin	Willemite, Calcite, Hydrozincite	Franklin, NJ
" "	Hardystonite, Calcite	" "
" "	Willemite, Calcite	" "
" "	Unknown rock	Unknown location
George Durland	Rose quartz	Custer, SD
" "	Chalcedony geode	Dugway, UT
Nancy Shinowara	Zultanite, Diaspore	Anatolya Mtns., Turkey
Len Deerkowski	Epidote on Dolomite*	Gettysburg Quarry, PA
Jonathan Harris	Calcite (FL, PH)*	National Limestone Quarry, Mt Pleasant Mills, PA
Linda Smith	Pumice*	Valdez Caldera, NM



VANDANNE w BIRDT
MARICU



Geodes from a
stream bank in
Bloomington, Indiana
John Beatty



Geode
From Brazil
John Beatty





GLMSMC BOARD MEETING MINUTES

There have been no board meetings since the prior edition of the Rockhoulder.

FUTURE ROCKHOUNDERS OF AMERICA (THE MOCKS, AGES 10-15)

Mark Dahlman

Next Meeting Date: September 14, 2015

Meeting Time: 7:45-9:00 PM

Meeting Location: Sunroom Cafeteria at the Rockville Senior Center

June 8th Meeting

At our June meeting, we discussed some properties of minerals that can be used to identify those minerals with a microscope. We also took home an extra helping of specimens to tide us over until September.

September 14th Meeting

At our September meeting, we will be deciding on the FRA badges for the fall. Come and help us decide what's next. FRA members, if you have 10 labeled micromounts (requiring magnification

to appreciate them), 10 labeled thumbnails (typically in 1" boxes), and/or 10 labeled miniature specimens (in 2" boxes), please bring them to our meeting so you can receive credit toward the World in Miniature badge. See you at our meeting!

For more information on the Future Rockhounds of America program, please contact Mark Dahlman at <fra_advisor@glmsmc.com> or 301-428-0455.



FIELD TRIP NEWS

Jonathan Harris

Flintstone, MD, and Medford

Sam Linton

Our Veteran's Day 2014 hounding trip of the year for me was to Bedrock Quarry in Flintstone, MD. As with virtually all quarries in Maryland, it was a tough hound. We were dealing with the Tonoloway Formation, which stretches from West Virginia to Pennsylvania. It is made up of dark gray slate with veins of calcite that is intermixed with dolomite, fluorite, and quartz. At some quarries along the formation, you can find strontianite and celestite... this quarry was said to have native sulfur, though that was an "early days" find.

It was easy to hound in because it resembles Mount Pleasant Mills Quarry in Pennsylvania, which I have hounded many times. However, I only walked away with a 1' cubed rock that I trimmed down to two pieces... see pics! No kidding, this is a really good fluorite for Maryland... for this formation, usually fluorite is massive or in cubes imbedded in calcite, which crumbles apart when trying to extract. "Herkimers" are not common for Maryland or this formation. I didn't notice it on the rock until I started trimming.

My second hounding trip was to Medford Quarry in Westminster, MD. This is a famous Maryland quarry, because it had some really good specimens "back in the day"... people claim they stepped on a specimen with every step they took... a highly exaggerated statement for sure. Luckily, we did not hound in Pit 1... rarely produces crystal specimens, so you are likely to get skunked unless you collect fluorescent minerals. Instead, we were taken to the virtually inactive Pit 2. Blasting rarely occurs in this pit, as it has recently become the dumping area for the quarry's junk rock. This is unfortunate, because this pit is where the good stuff is. Please see my pics for the specimens that I found! The pyrrhotite and malachite ones came out of the same small pocket (on a 2.5' cubed boulder)... (a total of six small cabinets were had after trimming)... they are of a quality that would be considered rare for Maryland... great "modern" finds to say the least. BTW, I cut my thumb on a table saw a week prior, so I had to extract these with one-handed swings of my 20lb sledge... this is why I lift weights. The calcite one was buried amongst boulders in the berm... mostly damage free. Though I didn't walk on specimens with every step, Medford did not disappoint.

Willis Mountain Kyanite Mine (Virginia Kyanite Corporation)

Saturday, August 22, 2015

Our annual trip to Willis Mountain will be August 22, 2015. Please read the announcement from the host clubs for details (below). Please note the following:

1) Sign up by August 15 (by 9PM), by sending an email with "Willis Mountain" in the header to jgharris7@gmail.com) and agreeing to the rules, including our standard club waiver. Please do not reply to this message for reasons other than signing up.

In your signup, please list all people from your family attending and specify whether you will be staying for the lunch afterwards (see below).

2) Note that this mine is slightly more than 3 hours from Rockville. Note that the **arrival time should be 8:30 AM** to ensure sign-in and safety briefing.

3) If you use certain customer-unfriendly services and apps (yahoo is one of them), **make sure your reply gets sent to jgharris7@gmail.com** and not the entire list. If you don't and your reply goes to the entire list, it will be filtered and rejected. If the "To:" field of the message shows as "Jonathan G Harris via" **you need to override the field.**

Announcement from the host clubs:

OFFICIAL COMBINED MINERAL COLLECTING FIELD TRIP

THE GEM AND MINERAL SOCIETY OF LYNCHBURG, VA INC. (HOST)

AND

THE ROANOKE VALLEY MINERAL AND GEM SOCIETY INC. (HOST)

An official field trip of the Gem Lapidary and Mineral Society of Montgomery County, MD

KYANITE MINING CORP. DILLWYN, VA: ANNUAL FIELD TRIP

WILLIS MOUNTAIN KYANITE MINE

If the mine is working, we may have to limit our collecting areas

August 22, 2015

9:00 AM to 1:00 PM

SAFETY: Everyone must arrive at the office parking lot no later than 8:30AM to sign the release form and hear the required safety briefing. *Each Club field trip leader, or their appointed replacement, will act as safety observer while in the mine and will be expected to be on the lookout for and correct all safety infractions from any collector from any club.* Keep in mind that this site is one of the few that is still open for collecting. **Not obeying all the safety rules will cause this site to be closed to all future collecting.**

DRIVING FROM THE ROANOKE AND LYNCHBURG AREA: From Roanoke, follow US 460 East to Lynchburg, to the Sheets Station on US 460 and Rt. 811 in New London. Continue on the US 460 East by-pass around Lynchburg thru Appomattox and take Rt. 24 North to its end at US 60, Mt. Rush. Continue on US 60 East to Sprouses Corner. Turn right on US 15 South and drive 4 miles to Willis Mt. Plant Road. Turn left and stop at the stone mine office. Park out of the way as not to block traffic. Do not park along Rt. 15. Allow 1-1/4 minimum hour driving time from New London

west of Lynchburg to the mine office.

GENERAL LOCATION and ASSEMBLY TIME: Everyone will meet at the mine office for sign-in and safety instruction so be there no later than 8:30 AM. The mine is located north of Farmville, Va. on Rt. 15 North, James Madison Highway. Proceed from US 460 North on Rt. 15 for a little over 12 miles to Willis Mt. Plant Rd. The stone mine office is on the right. If you approach from Rt. 60 at Sprouses Corner, then go south on Rt. 15 for 4 miles to Willis Mt. Plant Rd. and the office will be on your left. Wait in the parking lot and do not block traffic. Many trucks may be using the road. While you're waiting, be sure to enjoy the beautiful blue kyanite bolder in the front yard from the old closed Baker Mountain.

COLLECTING: Willis Mountain is what's known as a monadnock. The kyanite exposure resisted weathering and, as the surrounding area was eroded and weathered away, the mountain outcrop was left standing. This is very much like the famous Graves Mountain kyanite mine in Georgia. The center of the mountain has been mostly mined away. We should be able to find plenty of white kyanite blades in the massive kyanite quartzite; pyrite; quartz; hematite with some iridescence, red mica, green mica, apatite and possibly some blue kyanite and pale green trolleite. Some of the white kyanite and quartz here has a beautiful light blue fluorescence and the apatite is yellow so bring your short wave lamp and blackout cloth.

EQUIPMENT: The standard quarry safety gear required is a hard hats with a mfg. date of 5 years or less, safety glasses, a pair of wheel chocks ether purchased, homemade or even a rock is acceptable. Every time you leave the car, turn off the engine, put in park and apply the hand brake and wheel chocks. ONLY STEEL TOED BOOTS WILL BE ALLOWED, THERE WILL BE NO EXCEPTIONS!!!. If you do not have the required safety equipment, you will not be allowed to enter the quarry. Also required are long pants, gloves, hammer and chisels, wrapping paper, buckets, and water. Be prepared for windy, hot or wet weather. We will be on the mountain top and it's always windy. We can drive to the designated collecting area, so hand trucks should not be needed. Bring a camera, as the view is awesome.

LUNCH AFTER THE DIG: This year, members from the Lynchburg Gem & Mineral Host Club will have a hot lunch and drinks available for a nominal cost in the pavilion beside the office. This service will be available immediately after the dig at 1PM and continue until everyone has eaten. This will also be a social get-together so that we can have a chance to become better acquainted with the members of our rock club neighbors and to provide some time to relax before their long ride home. You might want to bring your own lawn chair. This year we have expanded our group to 10 area clubs with the addition of the group from central Pennsylvania. There will also be other groups there as invited guests of Kyanite Mining.

AGE LIMIT: There is no age limit, but all children must be signed up for, supervised by an adult, and have all required safety equipment. No exceptions!!!

WEATHER: The trip will be canceled due to safety concerns in case of hard rain or a thunderstorm. Call to confirm if there is any question.

CONTACT: Jonathan G. Harris (GLMSMC-MD members)
jgharris7@gmail.com

OR

David Callahan, Field Trip Chairman for the Lynchburg and Roanoke Clubs

Phone: [540-297-1853](tel:540-297-1853)

Cell: [540-874-5201](tel:540-874-5201) (Day of trip only please)

Email: dbcalls1@aol.com

Web sites: www.LynchburgRockClub.org and www.rvmgs.com

TO THE WAY BACK MACHINE -- MINERAL COLLECTING: BEFORE ZERO TO THE 16TH CENTURY

Andy B. Celmer, EFMLS Historian

Hello Dear Friends,

Let's chat about mineral collecting and where it all began. Picking up pretty rocks goes far back in our family tree. Further back in time still is the avocation of Magpies and other birds to collect shiny objects. So collectors go way back. Mineral collecting for Medicinal and Mystical Purposes is recorded on clay tablets about 2,100 B.C.E. (Before the Common Era) and may be some of the earliest mineral collections. Ancient texts speak of Treasures and items of wonder belonging to the rulers of the world. The only grunts collecting minerals would be the miners themselves. All those collections have been lost to the sands of time and mineral collecting did not advance for a Long Time.

We credit this lack of progress to Aristotle (384-322 B.C.E.) and if you were paying attention to my other articles, you know he liked to figure things out using pure thought, without the need to collect, study or test an object. A Natural Philosopher pursued this line of reasoning at the time. Therefore there is no need for a collection of plants, animals or minerals; you can divine the answer with your intellect.

"But wait Andy B," you say, "What about Pliny the Elder?" You are correct! Pliny the Elder 23-79 A.C.E. (After the Common Era) wrote a more than 150 Volume work that contained all known knowledge of that time. Some disciplines addressed include; botany, zoology, astronomy, geology and mineralogy. His "Natural History" contains numerous inventions and processes, which stimulate advances throughout the Roman Empire. However in the area of Natural Philosophy, Aristotle holds sway.

Of course we are looking at our ancestors through 20-20 lenses. None-the-less 2,000 years go by without much change. Collections are classified using the signs of the zodiac or alphabetically.

Then, one day the Renaissance (14th to 17th century) arrives upon the scene. People of means want to study and understand nature. Collections of the natural world begin to bloom and slowly, detailed examinations lead to classification systems.

I present this Reader's Digest version of the first few millions years of mineral collecting because not much is written about these collections. I can say that Fred Flintstone, employed as a miner in a quarry, created the first mineral collection until Wilma convinced him to use the collection to build an addition on their house. This is anecdotal evidence which does not belong in such a hoity-toity article! Suffice it to say, a collector using physical characteristics of minerals as a classification system is a collector of interest. What follows is a thumbnail version of some of the mineral collectors of the 16th century, which as we all know is during the Scientific Revolution.

Georgius Agricola (1494-1555) is born Georg Bauer. He will later Latinize his name for his publications and because women dig it. He is trained as a physician and begins his mineral

collection for medical reasons, but that is just the camel's nose in the tent! He is appointed city physician of St. Joachimsthal, (Germany?) later to Chemnitz, both silver mining towns. These areas will contribute a great many samples to his collection. He also travels and corresponds widely, further enhancing his collection or "Holdings" as we say today.

Agricola will publish two important works in 1546. "The Nature of Minerals" classifies minerals by physical properties such as density, color, luster, transparency, taste, odor and shape. This classification system provides a rational approach for mineral collectors and they are off-and-running. Our current system of mineral classification is based on chemistry (sulfates, silicates, ext.) Chemistry is not rocks or geology and therefore will not be addressed in these pages.

Bernard Palissy (1510-1590) a self-taught potter started collecting minerals used in ceramics and glazes and after 16 years of experimentation invented a glazed stoneware prized by the aristocracy. Self-collecting over these years to save money for his pottery work, his observational skills served him well, as he learns about geology and mineral formation. As a Protestant he believes in examination of the Scriptures and coming to his own conclusions. He therefore, approaches the world and present day texts with a critical eye toward observation and deduction.

Business is good; Palissy moves to Paris and gives lectures using specimen as examples from his personal museum for prominent intellectuals. This is the first collection in Paris to be used for scholarly instruction. When reading his book you are expected to visit his museum and do the lab work to confirm Palissy's statements.

This is also the beginning of institutional museums. Many museums began with one person's collection, such as the Smithsonian. People who gave their collection to an institution include; Conrad Gessner's (1516-1565) collection is in Naturhistorisches Museum in Basle; Francesco Calzolari (1521/2-1600/6) collection is part of the Miniscalchi Foundation in Verona; Ulisse Aldrovandi (1522-1605) bequeathed his museum and library to the city of Bologna, among many others.

Agricola and Palissy and many others began teaching a systematic classification of minerals using physical properties. Samples are available for examination and testing. No longer will the natural world be explored by conjecture. We learn to collect, examine and test the natural world to plumb its secrets. The world slowly begins to turn away, the sway of Aristotle.

EVENTS OF INTEREST

- **Audubon Naturalist Society:** New online registration for all programs below. Visit www.ANShome.org/adultnatureprograms and click on "Register Online". Questions? Call Pam at [301 652 9188 extension 16](tel:3016529188) or e-mail pamoves@anshome.org

SHOW ANNOUNCEMENTS

With this ad, \$1.00 off General Admission

2015

GEM MINER'S JUBILEE!!

August 14 - 16
LEBANON, PA

Beads! Findings!
Minerals! Fossils!
Gems & Jewelry!

THE MID-ATLANTIC'S BEST SHOW

RETAIL AND WHOLESALE EXHIBITORS
CLASSES, TAILGATING & CAMPING
BEAD, JEWELRY AND MINERAL RELATED DEMONSTRATIONS
OPEN TO THE PUBLIC ❖ WHOLESALE ROOM

FRIDAY & SATURDAY, AUG. 14-15: 10 A.M. - 6 P.M.
SUNDAY, AUG 16: 10 A.M. - 4 P.M.

\$6 ADMISSION - CHILDREN UNDER 12 FREE

Lebanon Expo Center: Route 72
5 mi. N. of PA Turnpike--Exit 266
80 Rocherty Rd. Lebanon PA 17042
www.gem-show.com
(see website for updates)
(301) 807-9745



East Coast
GEM, MINERAL
& FOSSIL SHOW



AUGUST 7 - 9, 2015
WEST SPRINGFIELD, MA

Amazonite
Frederick C. Witold © 2014

**EAST COAST GEM,
MINERAL & FOSSIL SHOW**

Better Living Center, Eastern States Exposition
1305 Memorial Ave., W. Springfield, MA
(1 mile west of I - 91)

AUGUST 7 - 9, 2015

Special Exhibit: "The Martin Zinn
New Mineral Collection"

Minerals • Fossils • Beads • Jewelry
Lapidary • Meteorites • Gems • Gold
Silver • Diamonds • Rubies • Emeralds

Air Conditioned Hall • Guest Speakers
200 outstanding dealers

Show Hours: Fri. & Sat. 10 - 6 • Sun. 10 - 5
Admission: \$6.00 • Parking - \$5.00
Children under 12 free with adult

Wholesale Section for Qualified Buyers
www.mzexpos.com

Like us on Facebook-facebook.com/mzexpos

Martin Zinn Expositions, L.L.C.
P.O. Box 999
Evergreen, CO 80439

First Class Mail
U.S. Postage
PAID
Denver, CO
Permit No. 621

If you are planning a trip and want to know what clubs you might be able to visit, it would be worthwhile to visit the American Federation of Mineralogical Societies website. Check out their newsletter archives at <http://www.amfed.org/news/default.htm>.



BOARD OF DIRECTORS

President – Chris Luzier, 847 Springdale Drive, Millersville, MD 21108-1436, 443-995-5363

Vice President – Dave Tiktinsky, 9209 Laurel Oak Drive, Bethesda MD 20817-1937, 301-365-2812

Secretary – Dave Fryauff, 24109 Sugar Cane Lane, Laytonsville MD 20882-4031, 301-253-1687

Treasurer – Holly McNeil, 22 South Duke Street, Rockville, MD, 20850-1014, 301- 605-7179

Junior Advisor–Vacant

Field Trip Chairman – Jonathan Harris, 11932 Goya Drive, Potomac, MD 20854-3313, 301-545-0808

Membership Chairman – Doug Baum, 11205 Golden Meadow Ct., Germantown, MD 20876-1740, 301-515-4641

Show Co-Chairperson – Pat Repik-Byrne, 9 Starlight Court, Potomac, MD 20854-2658, 301-279-5962

Show Co-Chairperson – Andy Muir, 17949 Hazelcrest Drive, Gaithersburg, MD 20877-3761, 301-990-1370

Property Manager – Joel Rosen, 833 Rampart Way, Union Bridge, MD 21791-9325, 410-775-7937

Immediate Past President – Andy Celmer, 4798 Mid County Court, Monrovia, MD 21770-9417, 301-305-0229

EFMLS Liaison – Wendell Mohr, 9509 Emory Grove Road, Gaithersburg, MD 20877-3501, 301-926-7190

Bulletin Editor– In Transition

Life Members: Larry Harrison, Wendell Mohr, Juan Proaño, and George Durland.

Society Address: Gem, Lapidary, and Mineral Society of Montgomery County MD., Inc.

P. O. Box 444, Gaithersburg MD 20884-0444; Web Site: <http://www.glmsmc.com/>

All Society correspondence is to be sent to this address except that which is intended for *The Rockhounder* and its editor. Such items are to be sent to the editor's email address –

BulletinEditor@glmsmc.com

Permission to copy material printed herein, except specifically copyrighted items, is granted, provided credit is given.

Award Winning Bulletin
EFMLS, AFMS



TIME SENSITIVE
DATED MATERIAL
FIRST CLASS MAIL

THE ROCKHOUNDER
Gem, Lapidary, and Mineral Society
of Montgomery County, MD, Inc.
Kristin Lolmaugh
1282 Terrace Lane
Arnold, MD 21012